



Guide to Identifying Vaping Devices

This slide provides an overview of the key information school staff need to know about identifying common vaping devices used by students.

Introduction



Identifying Vaping Devices

This guide equips principals, teachers, and school staff with essential knowledge on recognizing common vaping devices used by students.



Compact and Concealable

Vaping devices come in various designs that are often compact and easily hidden, making them difficult to detect.



Understanding Appearance and Hiding Spots

Knowing the appearance of vaping devices and their common concealment locations is crucial for prevention efforts.

Pod-Based Vapes

Pod-based vapes are compact, sleek devices that often resemble USB drives or small highlighters. They are popular among students due to their discreet design and ease of use.





Disposable Vapes

Disposable vapes are single-use devices designed to be thrown away after the e-liquid is consumed. They last from 15,000 to 25,000 puffs

Box Mods

Box mods are larger, more powerful vaping devices that are boxy and bulky in design. They often include a removable tank for e-liquid, making them more noticeable than smaller, more discreet vape models.



Rainbow

Picture is Provided by the Manufacturer



THC Vapes and Wax Pens

THC vapes and wax pens are specialized vaping devices designed for the consumption of THC oil or wax. These devices often resemble pens or small flashlights, making them easily concealable. They are more prevalent in areas where marijuana is legal.

Key indicators to help identify if students are vaping.



Odor

Sweet, fruity, or earthy smells can indicate the use of vaping devices.



Clouds

Some devices emit visible clouds of vapor, while others produce more discreet plumes.



Behavior

Students may try to spend extended time in isolated areas like bathrooms to use vaping devices.

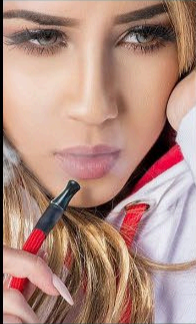
These key indicators can help identify potential vaping activity on campus and address the issue proactively.

Common Concealment Spots



Inside Sleeves

Students may try to conceal vaping devices by hiding them inside the sleeves of their clothing.



Hoodie Strings

Vaping devices can be tucked away in the strings or pockets of hoodies, making them difficult to detect.



Waistband

Students may try to hide vaping devices in the waistband of their pants or skirts, where they are out of sight.



Pencil Cases

Vaping devices can be concealed inside pencil cases, blending in with school supplies.



Backpacks

Vaping devices can be stored in the various pockets and compartments of a student's backpack, making them harder to spot.



Inside Books

Students may try to hide vaping devices by placing them inside the pages of their textbooks or notebooks.



Bathroom Stalls

Bathrooms and stalls can provide a private space for students to use vaping devices, making them difficult to detect.



Lockers

Vaping devices can be stashed inside bends of locker doors or under other objects, where they are out of plain sight.

VapeEducate

VapeEducate is designed to teach students about the risks and dangers of vaping.

COURSE TOPICS INCLUDE:

WHAT IS VAPING?

VAPING HEALTH RISKS

HOW MARKETING TARGETS THE YOUNG

VAPE ADDICTION

SOCIETY, VAPE AND YOU

VAPING & MARIJUANA, THC, ETC.

VAPING TIMELINE, CURRENT EVENTS & COVID-19

www.VapeEducate.com